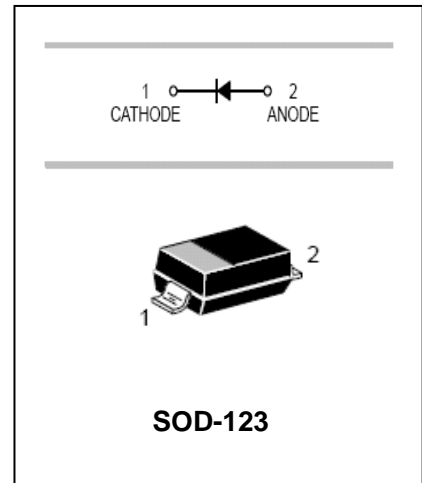


Surface mount low leakage diode

**BAV3004W**

**FEATURES**

- Low Leakage Current.
- High Reverse Breakdown Voltage.
- Fast Switching Speed.
- Surface Mount Package Ideally Suited for Automatic Insertion.



**APPLICATIONS**

- Surface mount fast switching diode.

**ORDERING INFORMATION**

Type No.	Marking	Package Code
BAV3004W	4P	SOD-123

**MAXIMUM RATING @ Ta=25°C unless otherwise specified**

Characteristic	Symbol	Value	Unit
Peak Repetitive Reverse Voltage	$V_{RRM}$	350	V
Working Peak Reverse Voltage DC Reverse Voltage	$V_{RWM}$ $V_R$	300	V
RMS Reverse Voltage	$V_{R(RMS)}$	212	V
Forward Continuous Current	$I_{FM}$	225	mA
Repetitive Peak Forward Current	$I_{FRM}$	625	mA
Non-Repetitive Peak Forward Surge Current @t=1.0us @t=1.0s	$I_{FSM}$	4.0 1.0	A
Power Dissipation	$P_d$	400	mW
Thermal Resistance Junction to Ambient Air	$R_{\theta JA}$	312	°C/W
Operating and Storage Temperature Range	$T_j, T_{STG}$	-65 to +150	°C



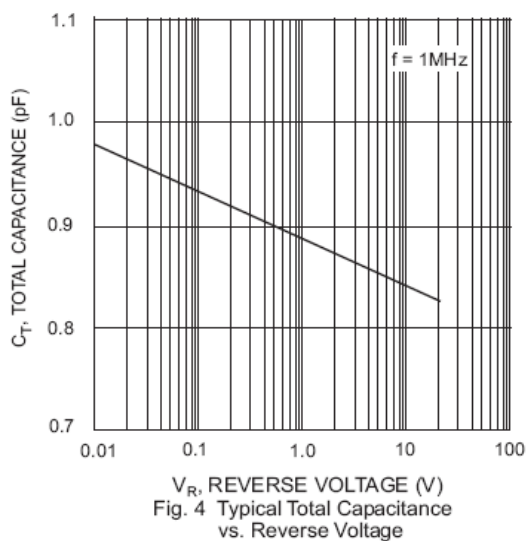
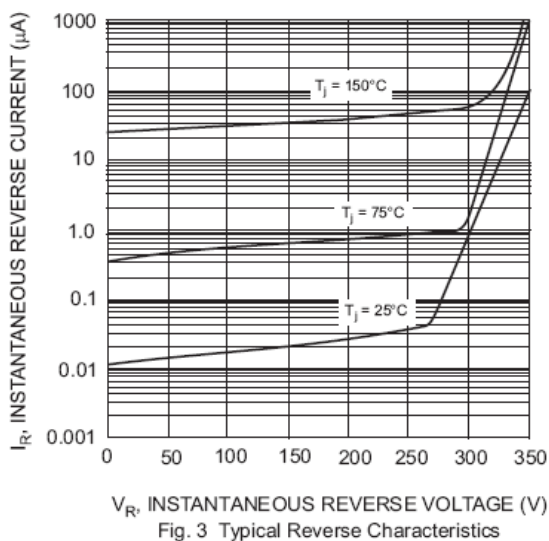
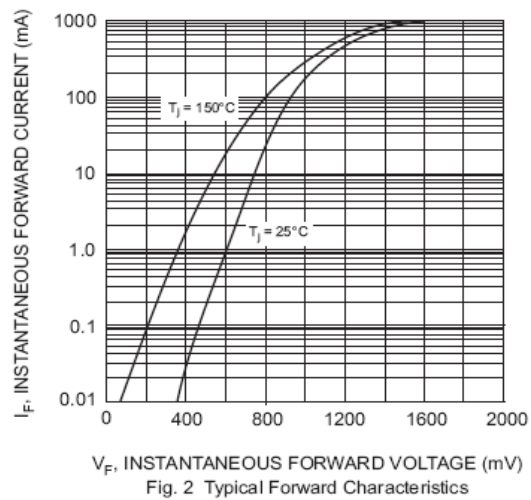
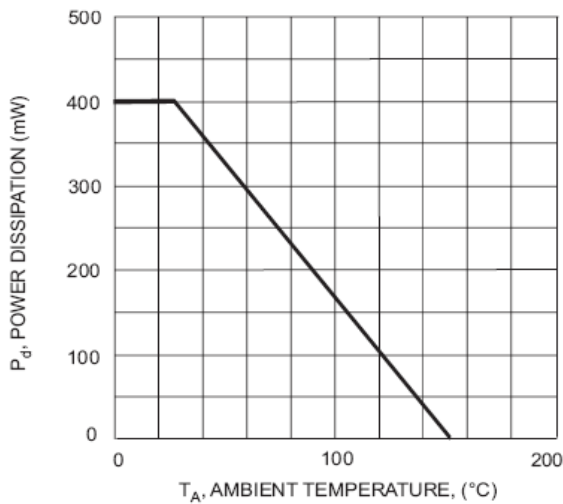
Surface mount low leakage diode

**BAV3004W**

**ELECTRICAL CHARACTERISTICS @ Ta=25°C unless otherwise specified**

Characteristic	Symbol	Min	Typ	Max	Unit	Test Condition
Reverse Breakdown Voltage	$V_{(BR)R}$	350		-	V	$I_R=150\mu A$
Forward Voltage	$V_F$	-	0.78 0.93 1.03	0.87 1.0 1.25	V	$I_F=20mA$ $I_F=100mA$ $I_F=200mA$
Reverse Current	$I_R$	-	30 35	100 100	nA uA	$V_R=240V, T_j=25^\circ C$ $V_R=240V, T_j=150^\circ C$
Total Capacitance	$C_T$	-	1.0	5.0	pF	$V_R=0V, f=1.0MHz$
Reverse Recovery Time	$t_{rr}$	-	-	50	ns	$I_F=I_R=30mA,$ $I_{rr}=0.1 \times I_R, R_L=100\Omega$

**TYPICAL CHARACTERISTICS @ Ta=25°C unless otherwise specified**



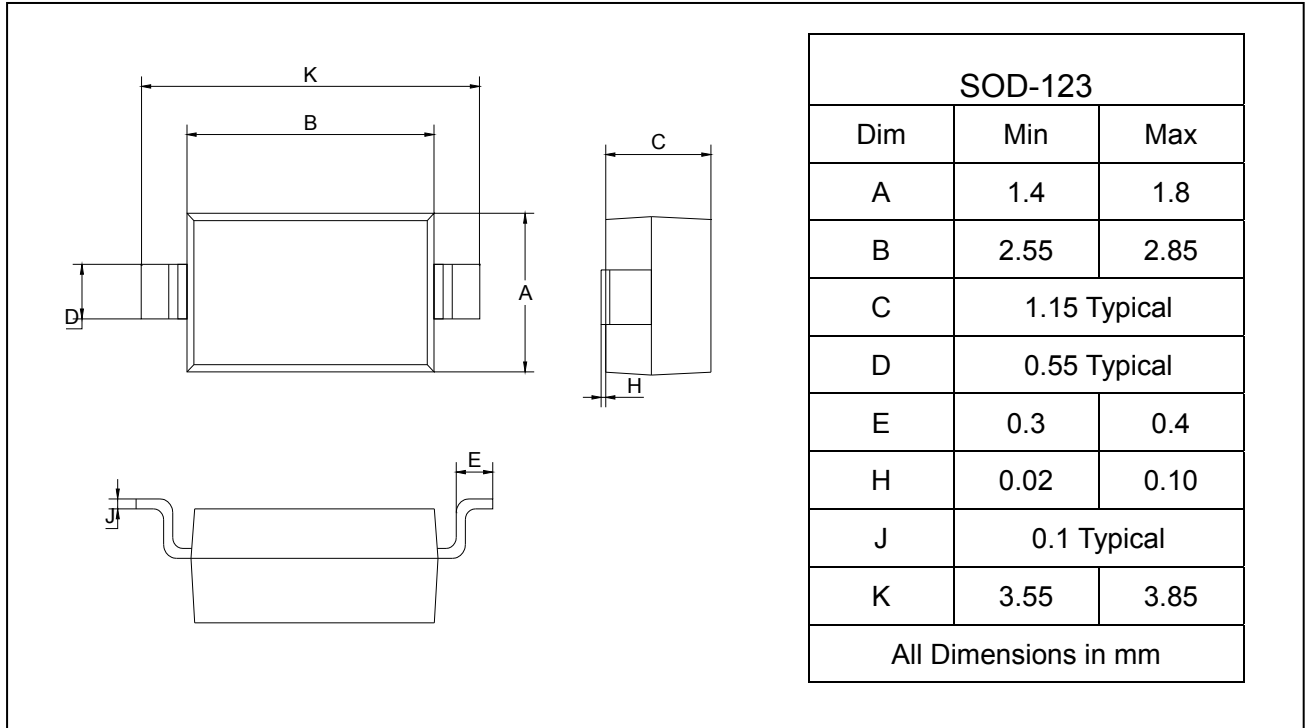
Surface mount low leakage diode

**BAV3004W**

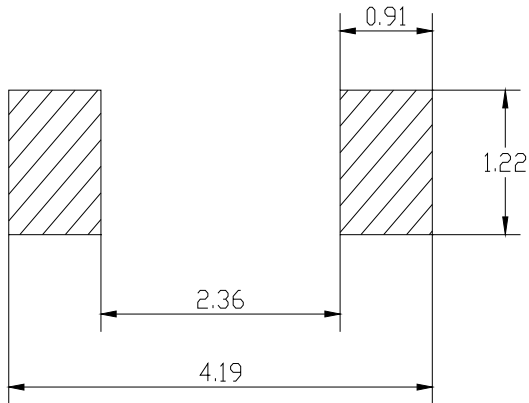
**PACKAGE OUTLINE**

Plastic surface mounted package

SOD-123



**SOLDERING FOOTPRINT**



Unit: mm

**PACKAGE INFORMATION**

Device	Package	Shipping
BAV3004W	SOD-123	3000/Tape&Reel